

Connectivity Instructions

One Touch Motors



General Information

Please fully charge motor before first use.

The LL OneTouch App must be installed to use Bluetooth and Smart Hub features.

Do not lift the motor by the wires or antenna.

This motor range is for indoor use only - do not use outdoors or in humid environments.

Each DC motor in this motor range has a built-in rechargeable Li-ion battery pack with integrated charging management. Max input voltage: 5V/2A.

Limits are saved even if the motor runs out of charge or is powered off.

Each motor can be paired with a maximum of 10 controllers.

Do not operate a motor from the DC range when it is being charged.

A motor's upper and lower limits cannot be set at the same position.

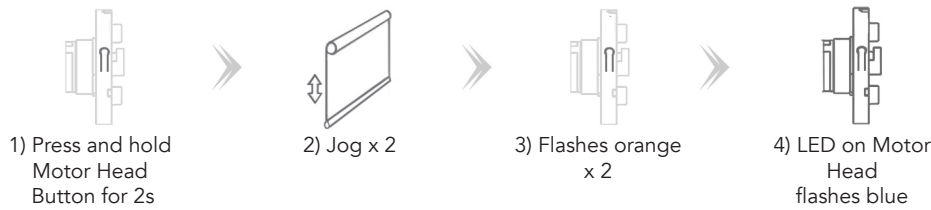
An LED on the motor head will flash 8 times at the start of operation for the DC motors when the battery is running low.

Removing any or all remotes does not remove set limits. The motor can run for a maximum of 6 minutes continuously.

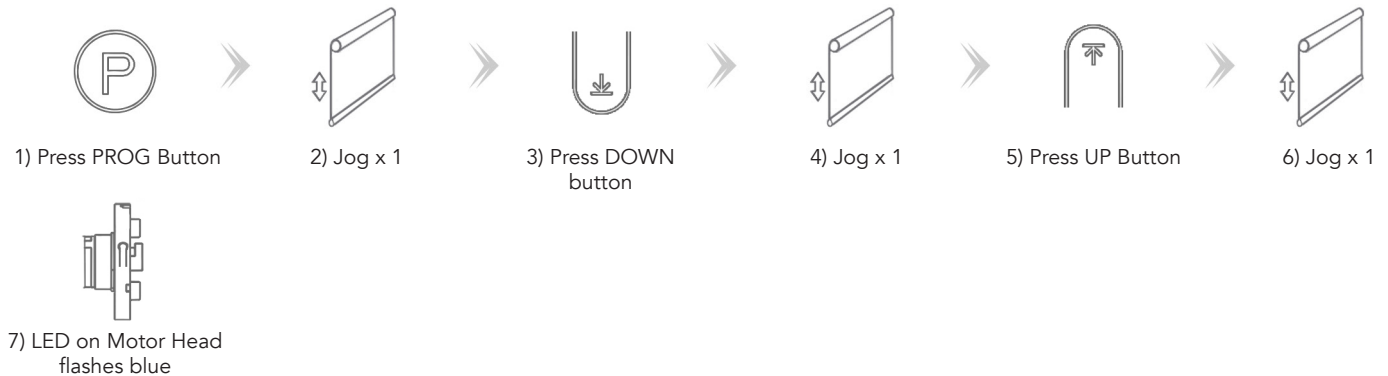
Bluetooth Connection

NOTE: Enables the user to operate the motor when out of range using the hub. User must have LLOneTouch app installed. These steps will put the motor in the correct mode to connect to the app. See separate APP instructions for full details.

Option 1: Entering Mode with Motor Head



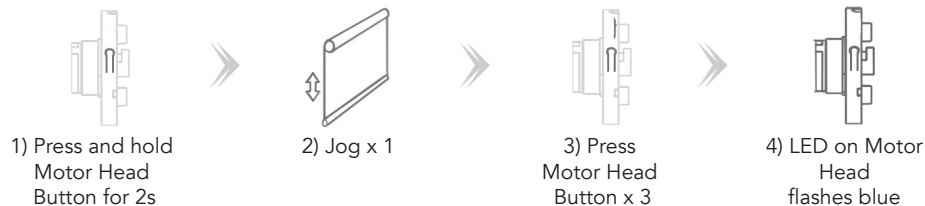
Option 2: Entering Mode with Remote



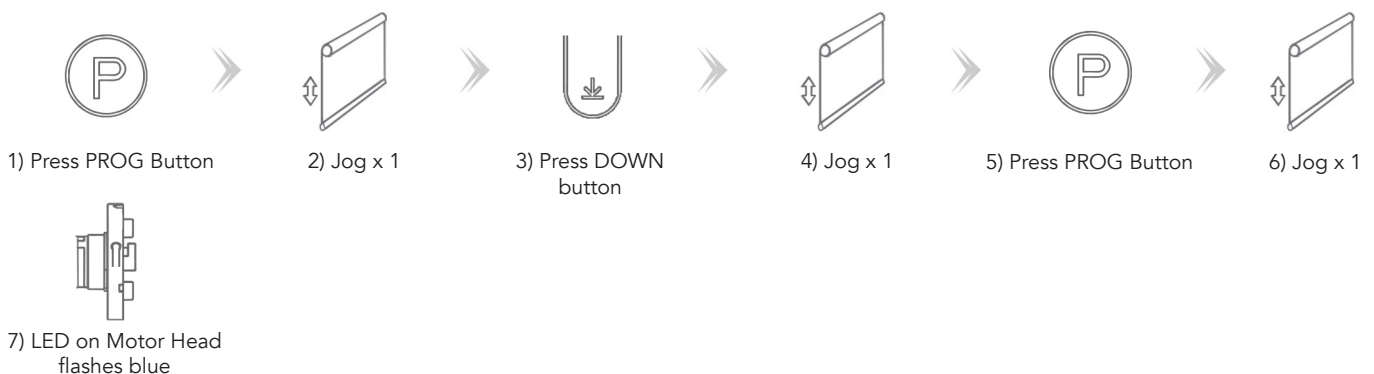
Smart Hub

NOTE: Enables the user to operate the motor when out of range using the hub. User must have LLOneTouch app installed. These steps will put the motor in the correct mode to connect to the app. See separate detailed app instructions for full connection and installation process.

Option 1: Entering Mode with Motor Head



Option 2: Entering Mode with Remote

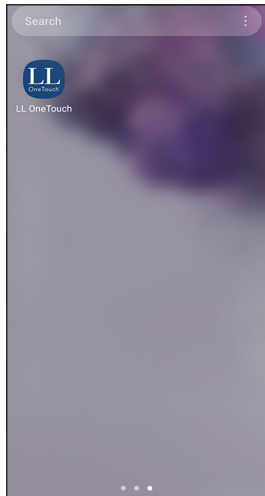


LL One Touch App Setup

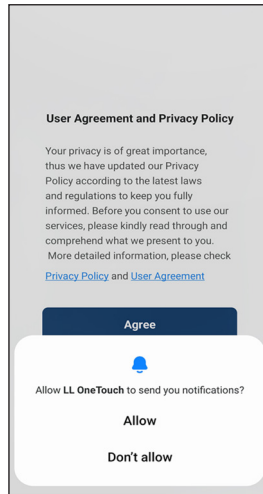
LL One Touch App Version 1.0.3. App requirements for Android/OS 6.0 and higher.

Install the LL One Touch App from the App Store or Google Play. Follow the steps below to setup an account and pair to first blind. Motors should be placed in **Bluetooth Pairing Mode** to carry out the following steps.

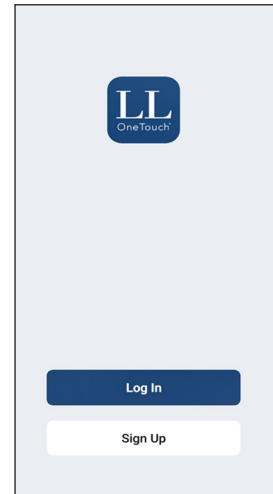
1) Open the Louvolite LL One Touch App.



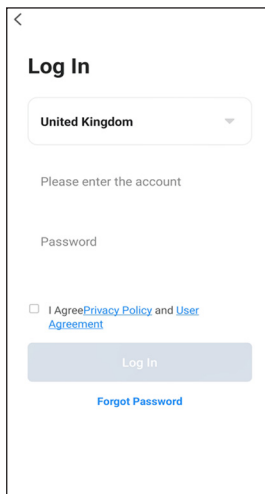
2) Follow steps for User Agreement and Privacy Policy.



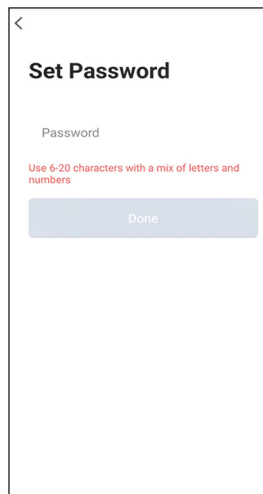
3) If required create a new account.



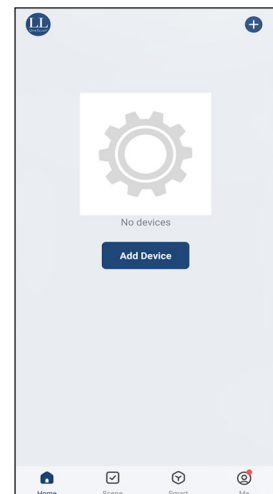
4) Follow steps for Log in or register with your information.



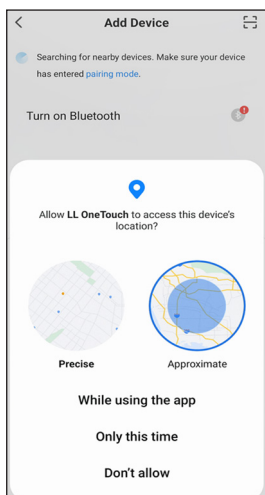
5) Set up a Password.



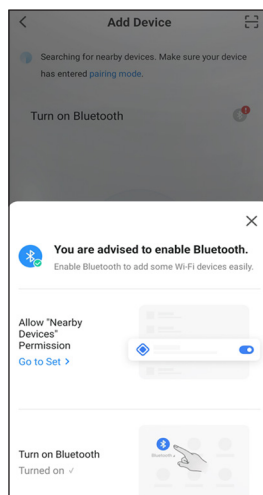
6) Press 'Add Device'.



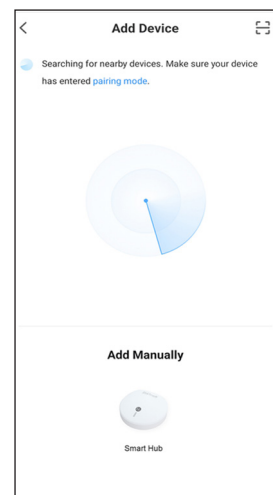
7) Choose location option.



8) Make sure Bluetooth is enabled on your phone and the motor you are adding is in Bluetooth mode.



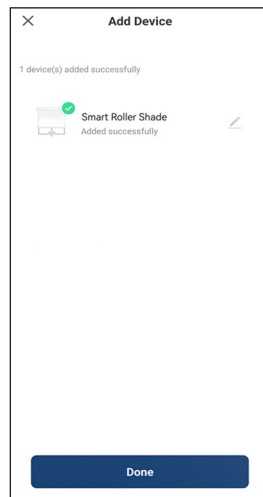
9) The app will automatically search for the Bluetooth motor.



10) Bluetooth motor appears on your screen. Press on the blind to start pairing process.



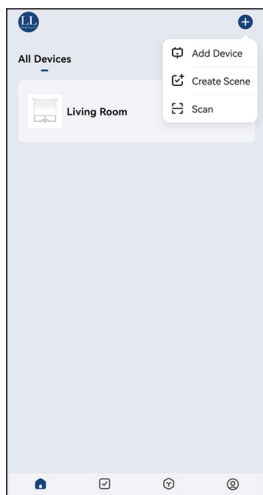
11) Press 'Done' if the pairing process was successful.



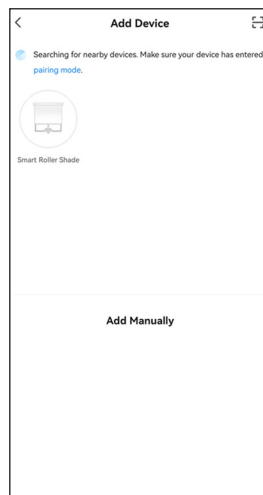
Pairing Additional Blinds

To pair a motor it must first be in Bluetooth Mode. See Page One for this process. To make selecting the correct motor easier, place one motor at a time into Bluetooth Mode.

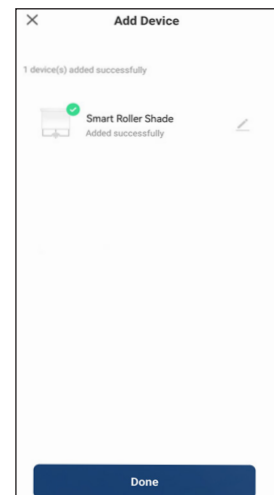
1) Press the '+' icon in the top right corner and then press 'Add Device'.



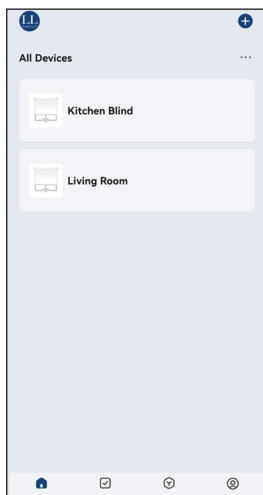
2) Bluetooth motor appears on your screen. Press on the Blind Icon to start pairing process.



3) Press 'Done' if the pairing process was successful.

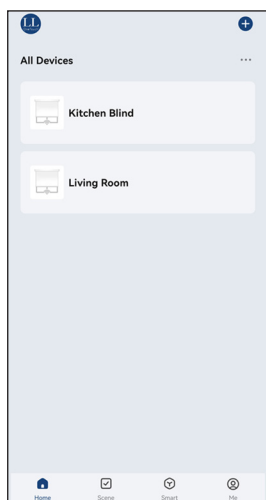


4) To add additional blinds repeat steps 1-3.

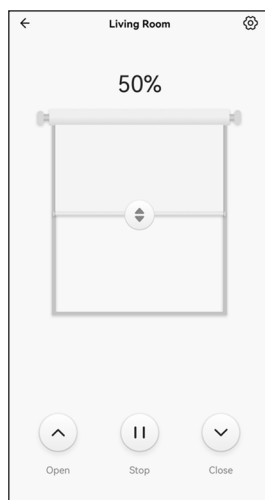


Blind Settings

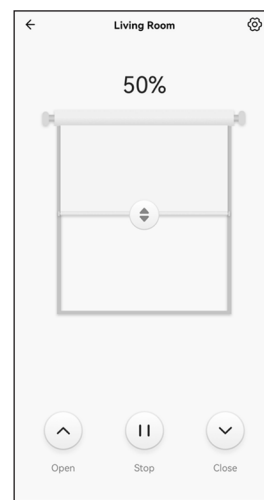
1) On the Home Screen select a blind to go into its interaction screen and additional settings.



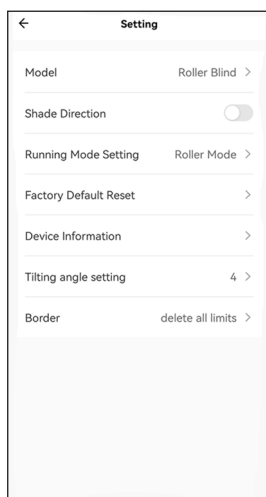
2) The Interaction Screen will open. Operate the blind with the buttons at the bottom or swipe the 'Blind' up and down on to change position.



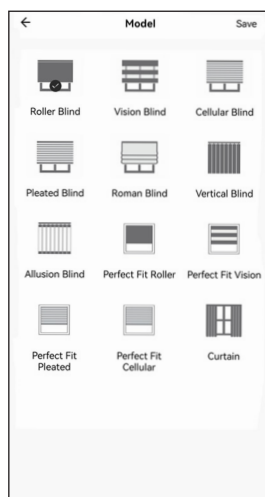
3) To change features of the blind, select the settings cog in the top right hand corner.



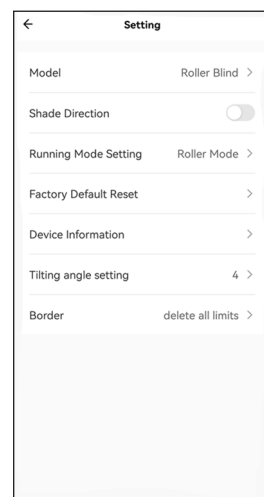
4) In the settings section you can set the type of blind the motor is operating by selecting 'Model'.



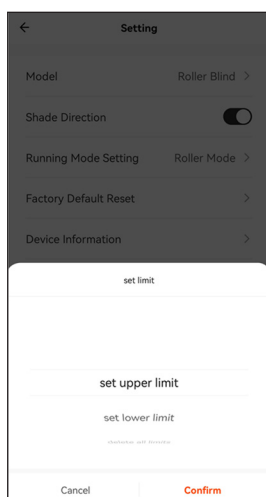
5) Select the icon that matches your blind type.



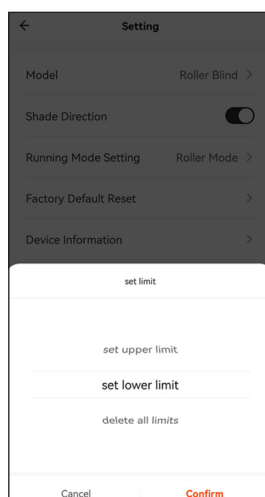
6) In the settings section you can set the upper and lower limits, or delete all limits by selecting 'Border'.



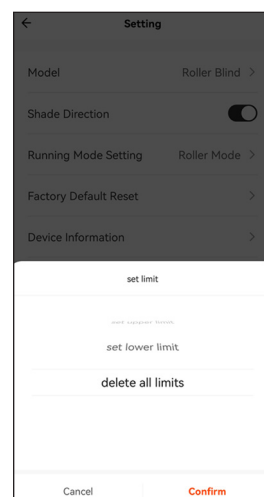
7) Position your blind for setting Upper Limit. Select 'Set Upper Limit' in Border and press 'Confirm'. The motor will jog and the upper limit is set.



8) Position your blind for setting Lower Limit. Select 'Set Lower Limit' in Border and press 'Confirm'. The motor will jog and the lower limit is set.



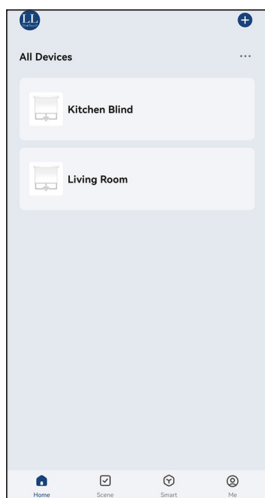
9) To delete all limits select 'Delete All Limits' in Border and press 'Confirm'. The motor will jog and all limits are deleted.



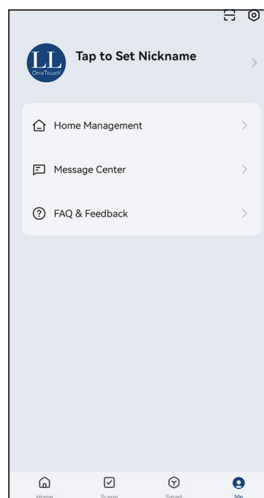
Home Management

Steps to create your 'Home'.

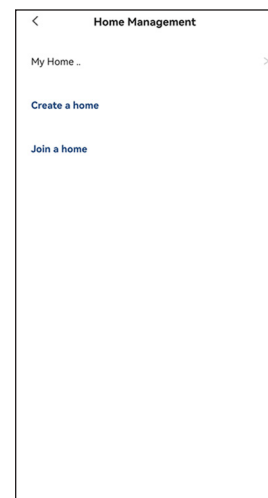
1) Press on 'Me' icon in the bottom right corner.



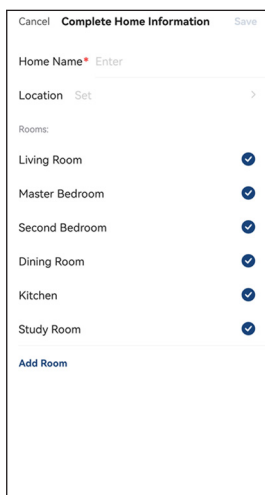
2) Press on Home Management tab.



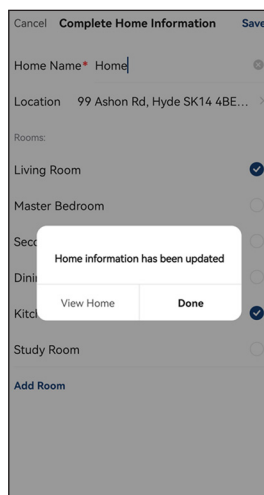
3) Press on 'My Home'. This is the default setup.



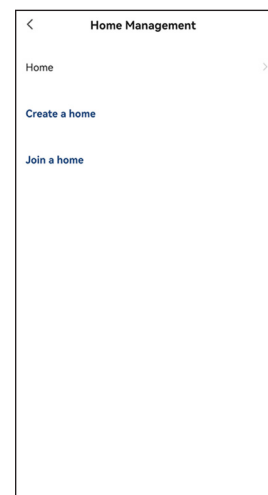
4) Complete the Home Information. Select the rooms needed or add any additional. Then press 'Save'.



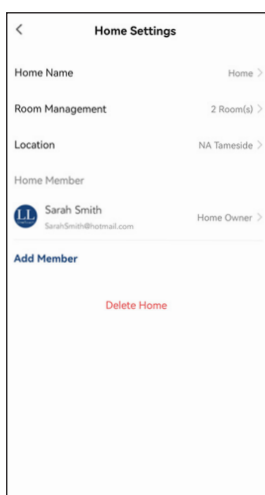
5) Press done.



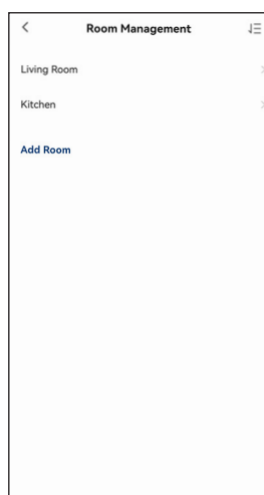
6) Select the Home tab you have just created.



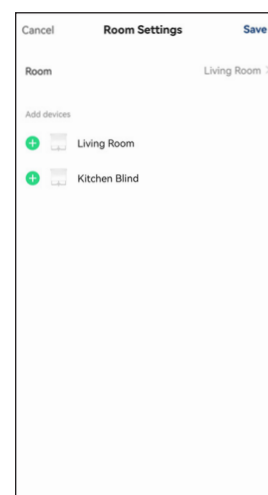
7) Press the Room Management tab.



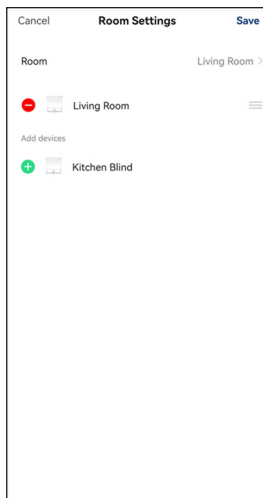
8) Select the room tab you would like to assign blinds to.



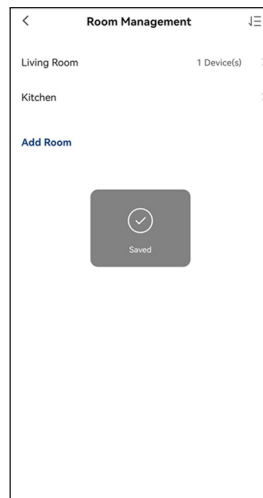
9) Paired blinds are listed in the 'Add Devices' section. Press the green plus icon next to the blinds you wish to add to the room.



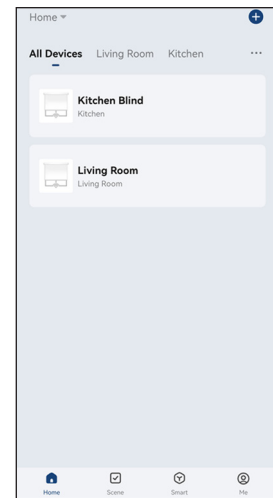
10) The room setting will now clearly indicate which blinds are and are not added to the room.



11) Add all the blinds required for the room and then press 'Save'. Do this for each room you create.

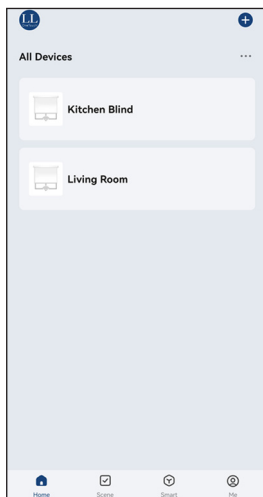


12) On the Home Screen you will now find room tabs as well as 'All Devices'. The blinds added to each room are shown under each tab.

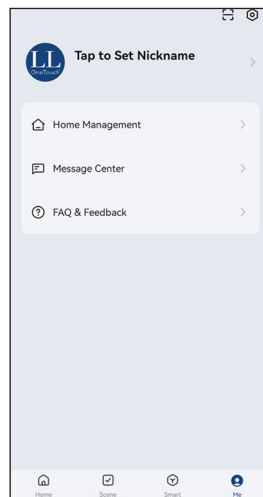


Home Management - Adding Members

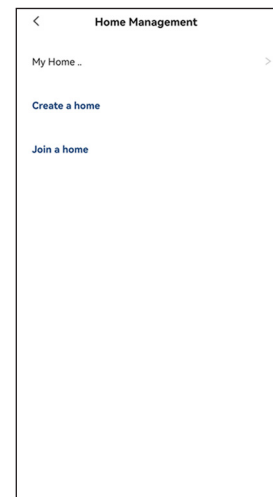
1) Press on 'Me' icon in the bottom right corner.



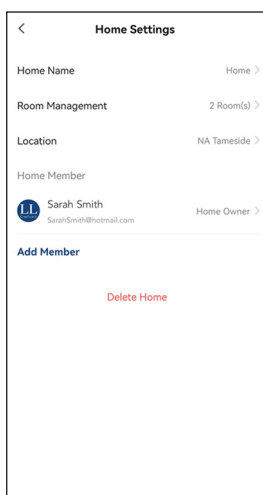
2) Press on Home Management tab.



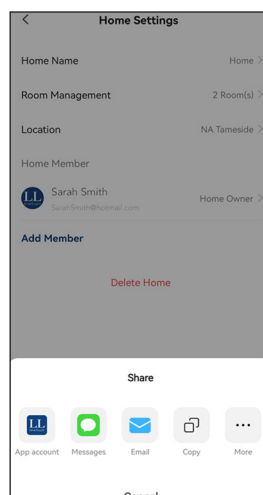
3) Press on the 'Home' you would like to invite a member too.



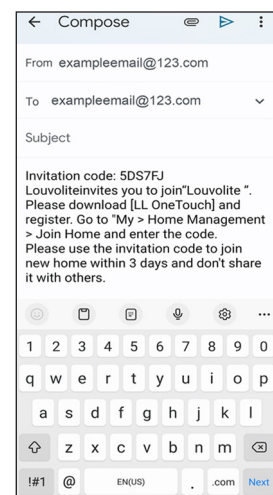
4) Press 'Add Member'.



5) Select the method you would like to share the invite, e.g. via App Account, messages, e-mail.



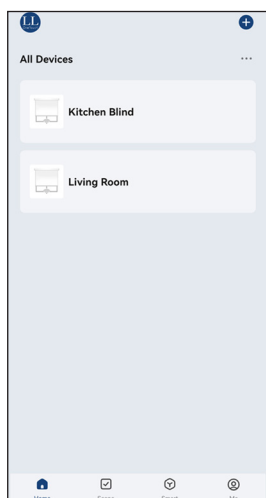
6) The person will receive an invitation code and instructions via the method you select.



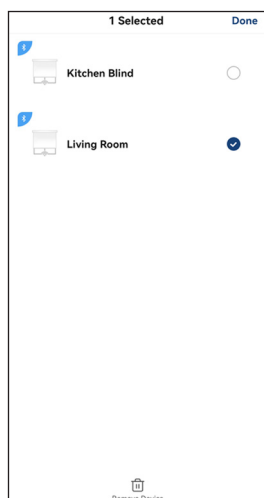
Deleting Blinds

To remove a blind from your app.

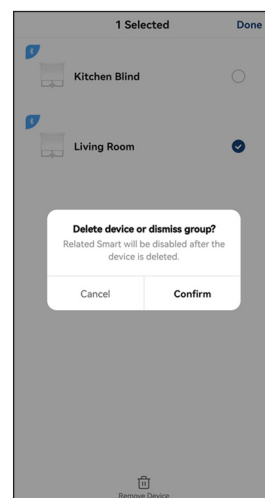
1) On the Home Screen press and hold on the blind you want to remove.



2) The selected blind will appear with the option to select additional blinds. Select all blinds to be removed and then press 'Remove Devices'.



3) Confirm to delete device.

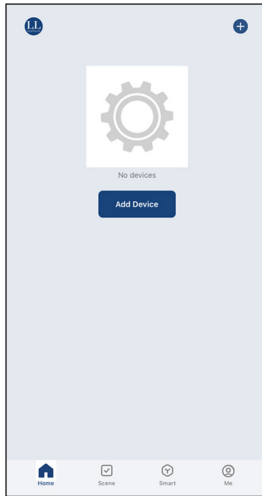


Smart Hub Set Up

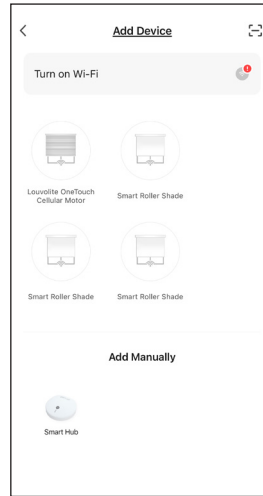
Connecting the Smart Hub to the LL OneTouch App.

Install the LL One Touch App from the App Store or Google Play. Follow the steps below to setup the Smart Hub. Motors should be placed in **Smart Hub Pairing Mode** to carry out the following steps.

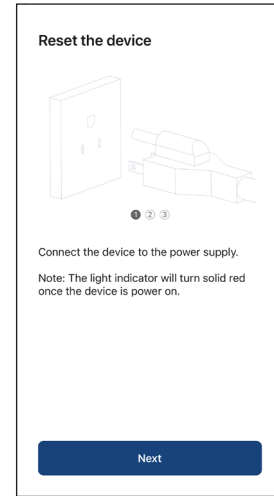
1) On the Home Screen press 'Add Device'.



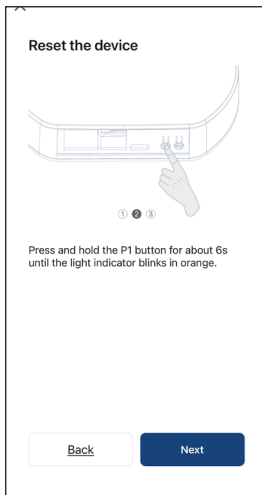
2) On the 'Add Device' screen, under 'Add Manually', select the Smart Hub.



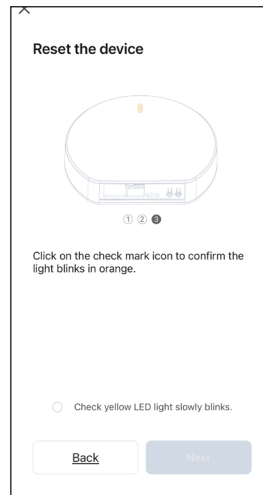
3) Follow the steps on screen.



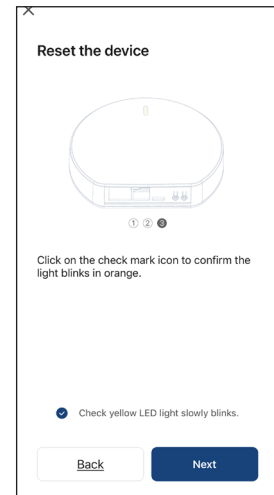
4) Hold the reset button on the Smart Hub (P1 Button).



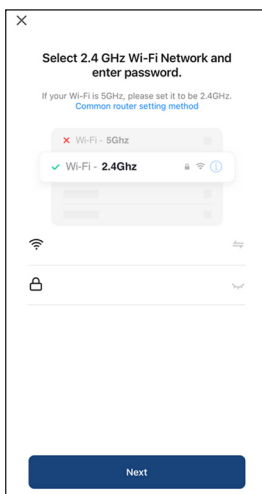
5) Check the indicator light is blinking.



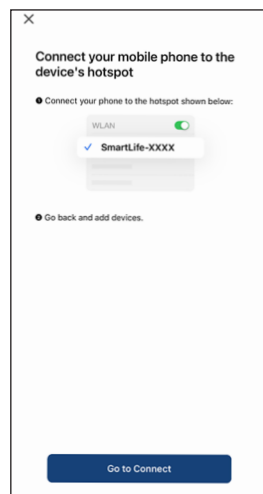
6) Tick the confirmation prompt and press 'Next'.



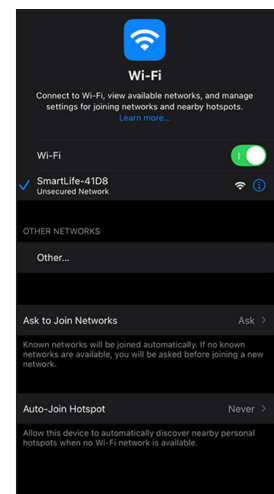
7) Ensure your phone is connected to your home Wi-Fi network.



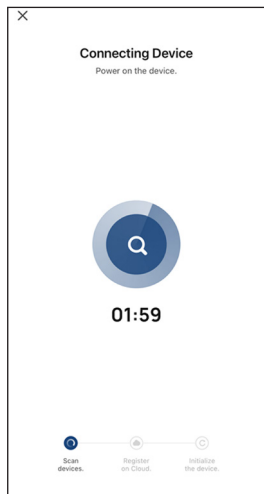
8) Connect your phone to the Smart Hub's hotspot.



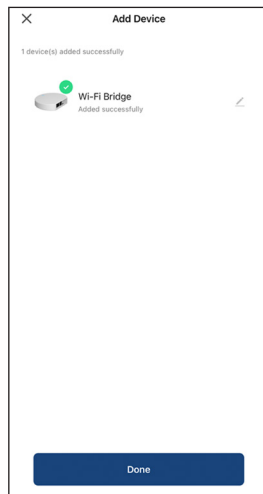
9) In your phone settings select the Smart Hub network.



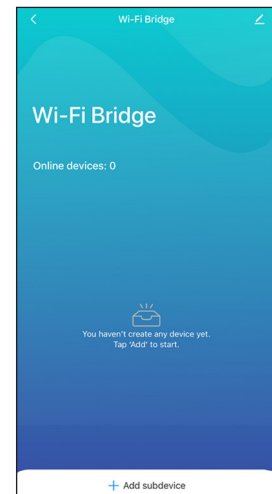
10) Wait for the device to connect.



11) The Smart Hub is now connected. Press 'Done' to complete the process.



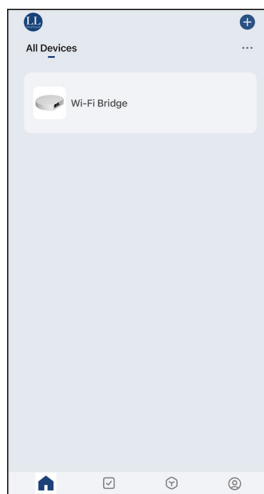
12) The Smart Hub's Home Screen will now open.



Pairing Motors to Smart Hub

Put motor in Smart Hub Pairing Mode. See Page One for this process. To make selecting the correct motor easier, place one motor at a time into Smart Hub Pairing Mode.

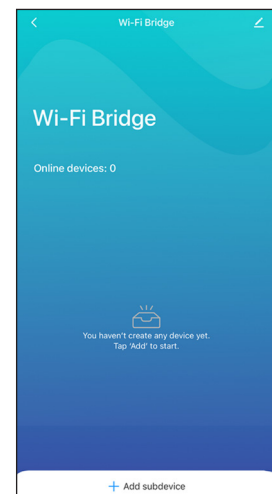
1) Open the App to the Home Screen. Make sure the motor you want to pair is in Smart Hub pairing mode.



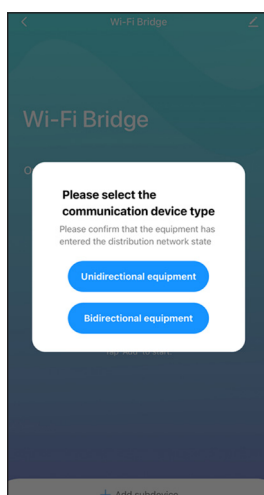
2) Select the Smart Hub tab. The Smart Hub Interface will open.



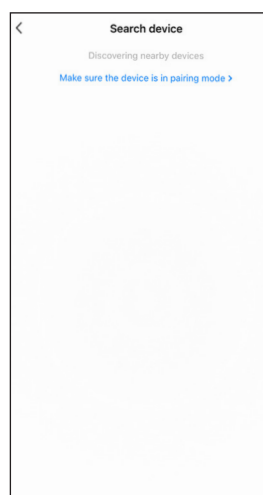
3) Press '+ Add Subdevice' at the bottom of the screen.



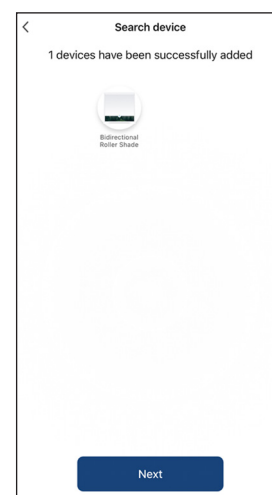
4) Select 'Bidirectional equipment'.



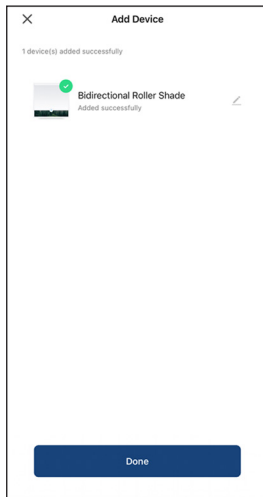
5) The app will automatically search for the motor.



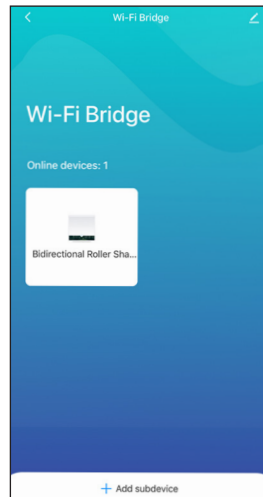
6) The motor will be added. Press 'Next'.



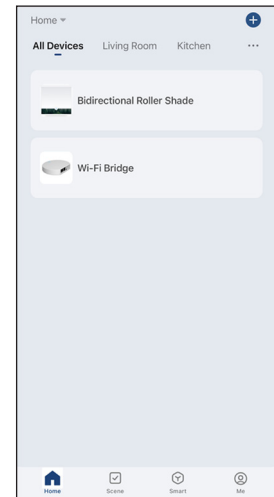
7) The motor has been added. Press 'Done' to finish the process.



8) The motor will now appear on the Smart Hub Home Screen.

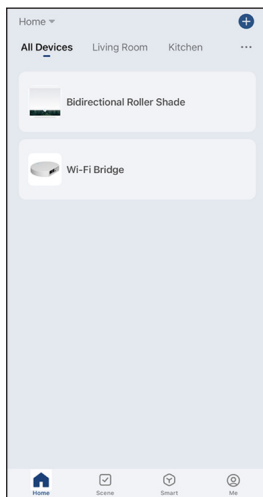


9) The motor will also show in the App Home Screen.

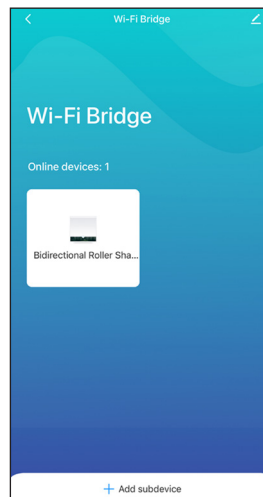


Setting Limits with the Smart Hub

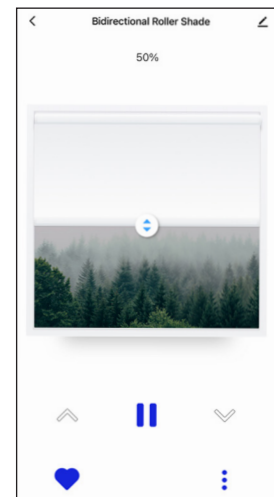
1) Open the App to the Home Screen. Make sure the motor you want to pair is in Smart Hub pairing mode.



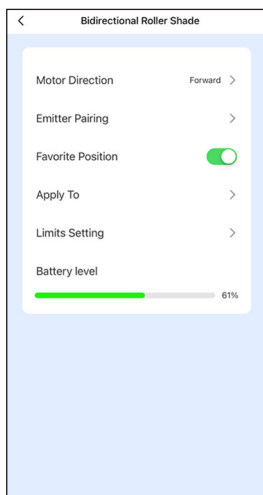
2) The Smart Hub interface will open. Select the motor you wish to set.



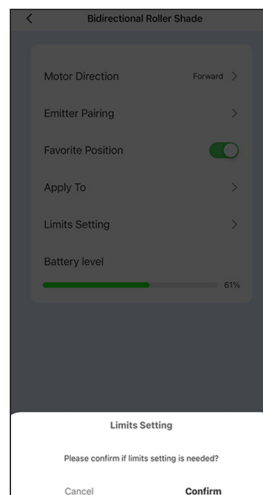
3) Press the 3 dots in the bottom right-hand corner.



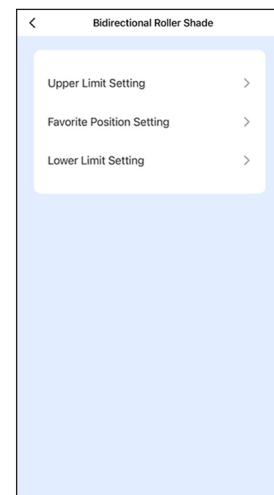
4) Select the 'Limits Setting' tab.



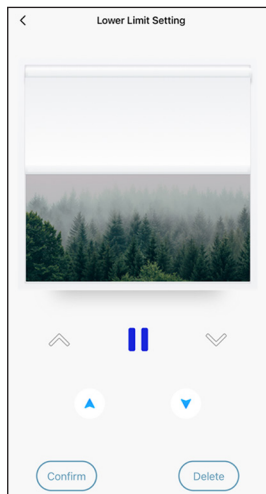
5) Press 'Confirm'.



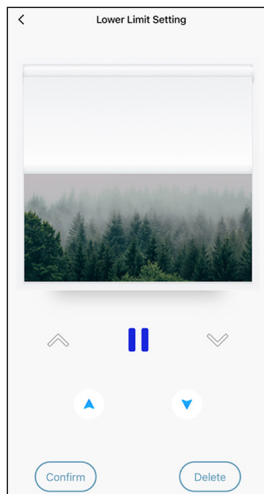
6) Select the 'Upper Limit Setting' tab or the 'Lower Limit Setting' tab.



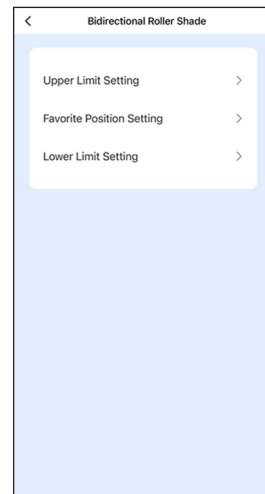
7) Use the arrows to move the blind to the position you require. Large arrows move blind in continuous mode. Small arrows move blind in jog mode.



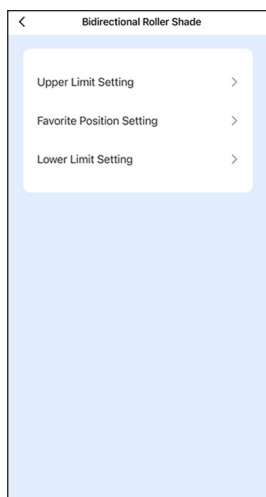
8) Once happy with the blind position press 'Confirm'.



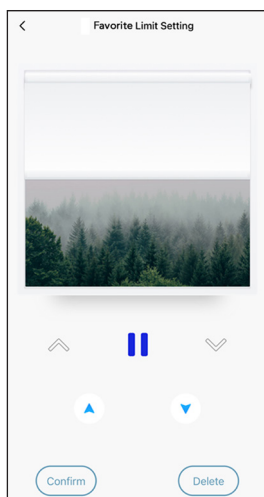
9) Set opposite limit following the same steps'.



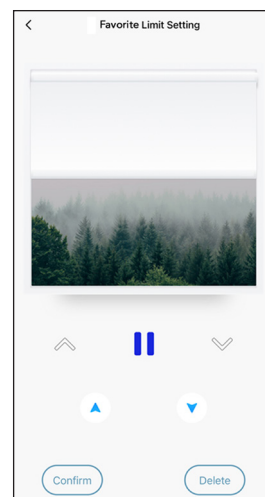
10) To set favourite position select 'Favourite Position Setting' tab.



11) Use the arrows to move the blind to the position you require. Large arrows move blind in continuous mode. Small arrows move blind in jog mode.

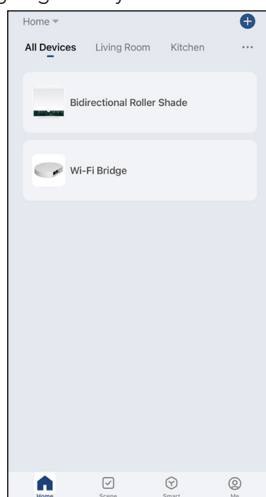


12) Once happy with the blind position press 'Confirm'.

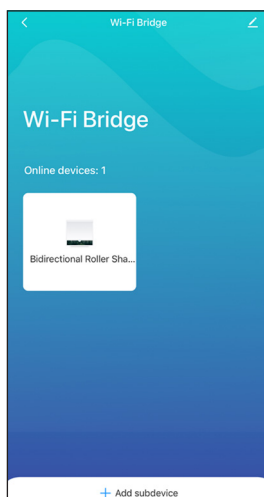


Deleting Limits with the Smart Hub

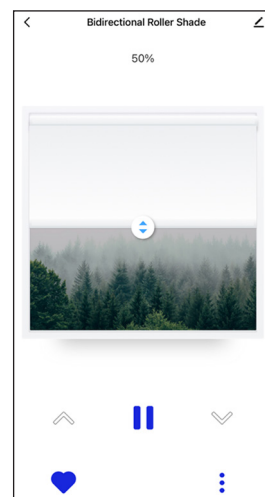
1) On the Home Screen select the Smart Hub tab. Deleting Limits can also be done by going directly into the motor tab.



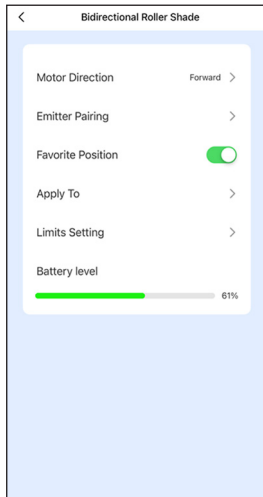
2) The Smart Hub interface will open. Select the motor you wish to modify.



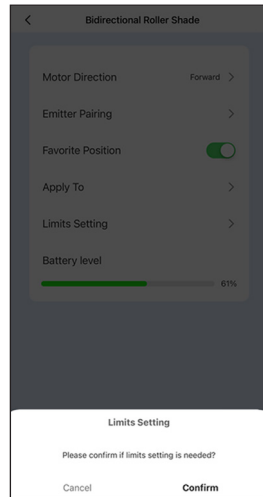
3) Press the 3 dots in the bottom right-hand corner.



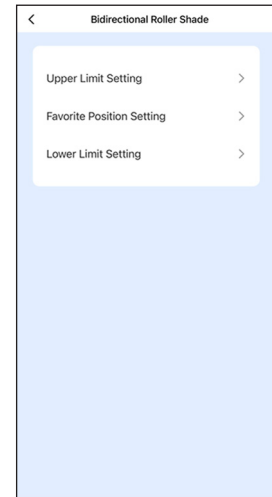
4) Press the 'Limits Setting' tab.



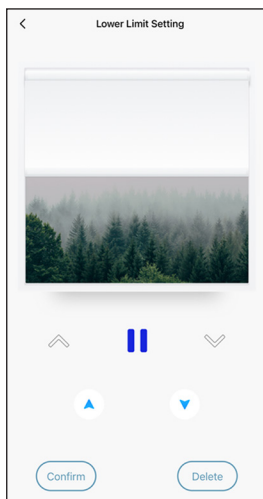
5) Press 'Confirm'.



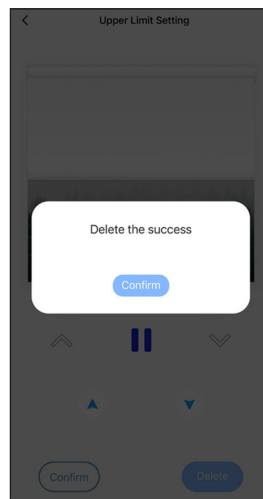
6) Press the limit or position tab you want to delete.



7) Press 'Delete'.

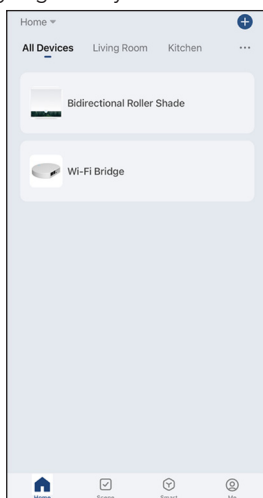


8) Press 'Confirm' to delete the position or limit.

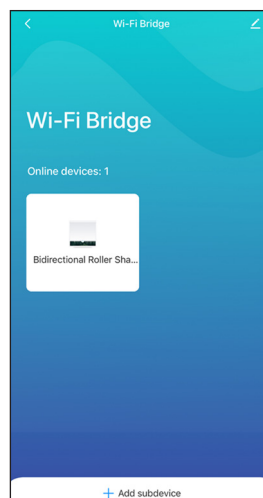


Customising Control Interface with the Smart Hub

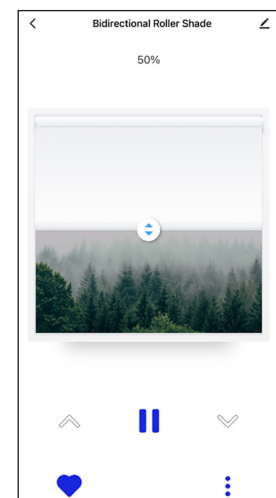
1) On the Home Screen select the Smart Hub tab. Deleting Limits can also be done by going directly into the motor tab.



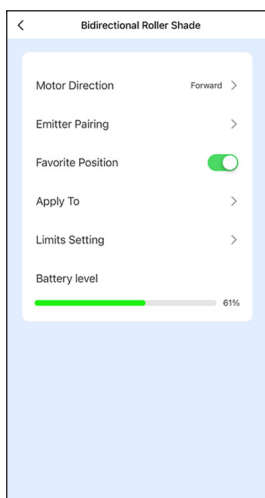
2) The Smart Hub interface will open. Select the motor you wish to modify.



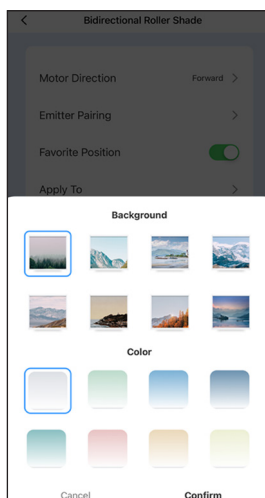
3) Press the 3 dots in the bottom right-hand corner.



4) Press the 'Apply To' tab.

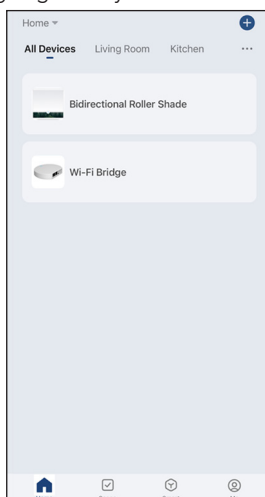


5) Select the background and colour to your preference.

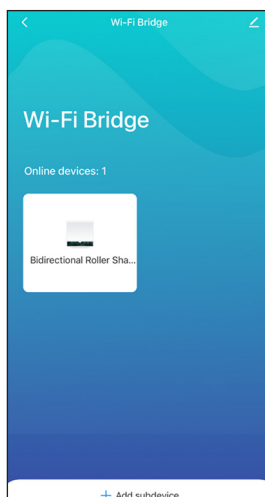


Changing Motor Name with the Smart Hub

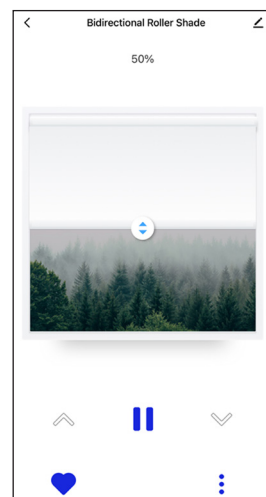
1) On the Home Screen select the Smart Hub tab. Deleting Limits can also be done by going directly into the motor tab.



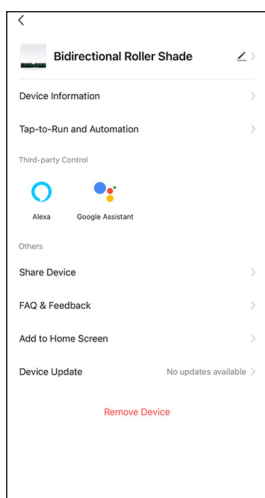
2) The Smart Hub interface will open. Select the motor you wish to modify.



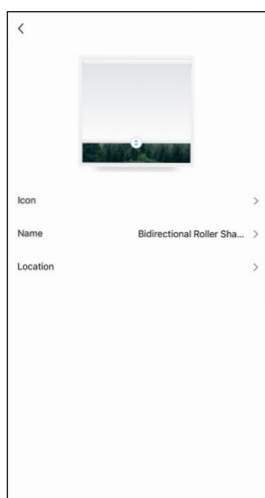
3) Press the pencil icon in the top right-hand corner.



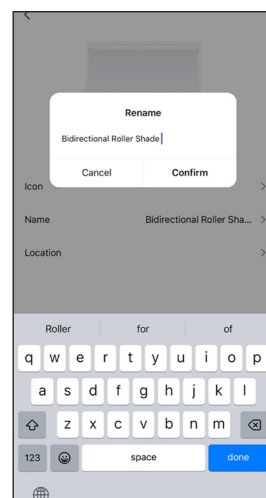
4) Press the pencil icon in the top right-hand corner.



5) Press the 'Name' tab.

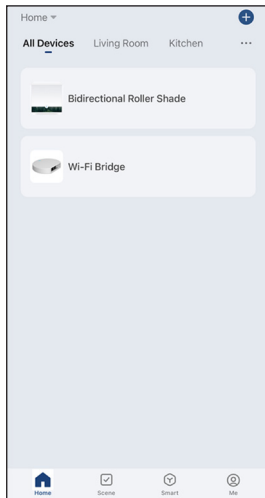


6) Rename the blind and press 'Confirm'.

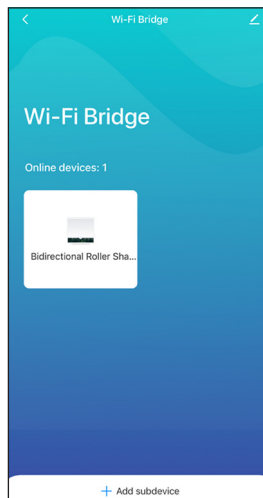


Changing Icon Display with the Smart Hub

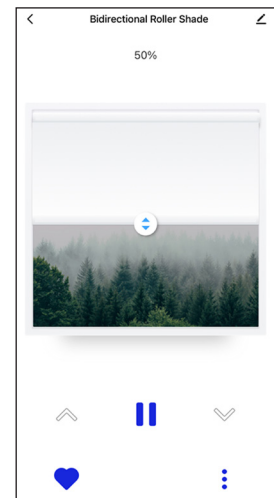
1) On the Home Screen select the Smart Hub tab. Editing motor names can also be done by going directly into the motor tab.



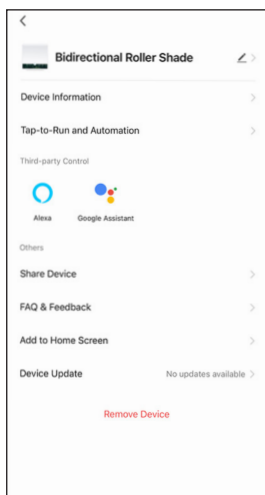
2) The Smart Hub interface will open. Select the motor you wish to modify.



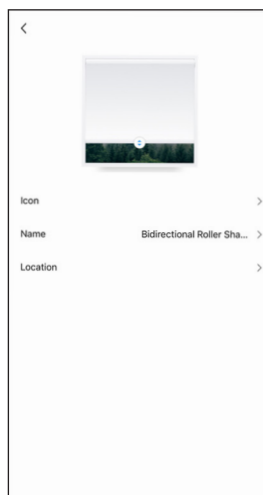
3) Press the pencil icon in the top right-hand corner.



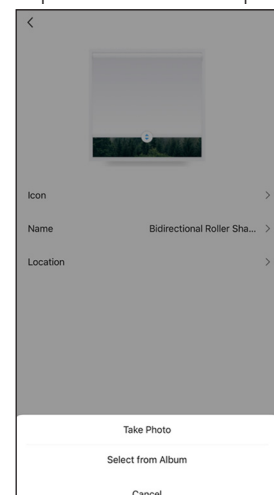
4) Press the pencil icon in the top right-hand corner.



5) Press the 'Icon' tab.



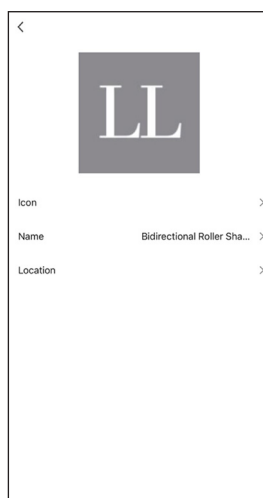
6) Select the method you would like to use to change the icon. App will require permission to access pictures.



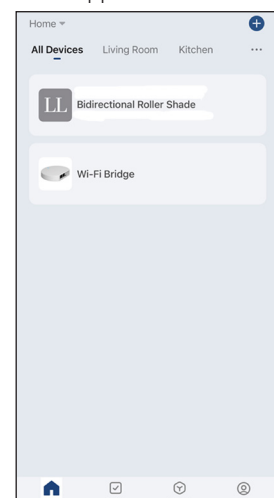
7) Preview the image and press 'Done' when ready to confirm.



8) The icon will update in the motor's Home Screen and Smart Hub interface.

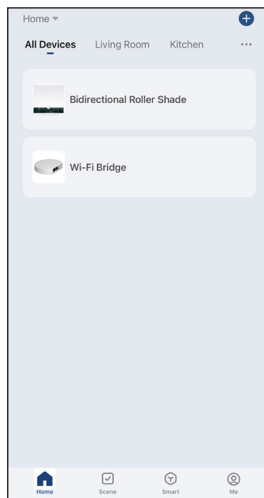


9) The icon will also be updated in the App Home Screen.

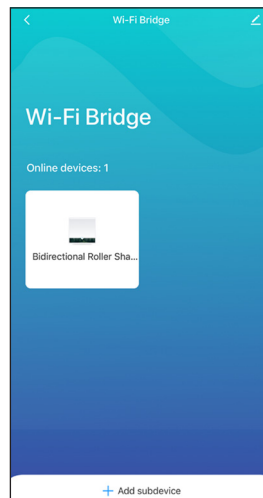


Adding Motors to rooms with the Smart Hub

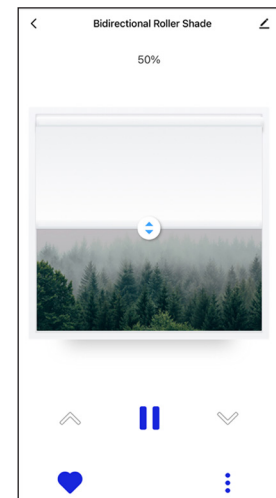
1) On the Home Screen select the Smart Hub tab. Adding a motor to a room can also be done by going directly into the motor tab.



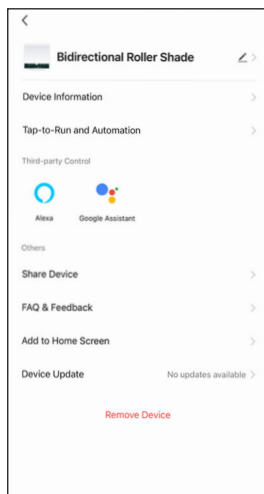
2) The Smart Hub interface will open. Select the motor you wish to modify.



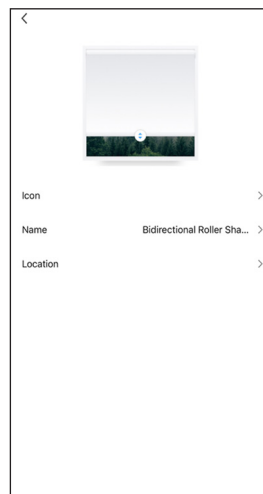
3) Press the pencil icon in the top right-hand corner.



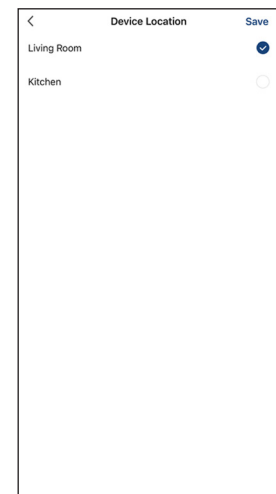
4) Press the pencil icon in the top right-hand corner.



5) Press the 'Location' tab.



6) Select the room tab with the blind's location and press 'Save'.



7) The 'Location' will update in the motors Home Screen and Smart Hub interface.



8) The location will also be added in the App Home Screen.

